

Welcome to our Swedish dream

There has been an adventurous transformation with the cottage



It has been a lot of hard work to realise our dream place

Please take good care of our cottage

We hope that you will enjoy your stay

Greetings

Marcus, Lucas, Camilla & Ricco

App

We have created an app that can be installed on a phone, tablet or computer.

The app contains information about:

- Practical information about the stay
- User manuals
- Pictures of the house
- Useful links
- Activities in the house
- Activities in the area

Link to app:

<https://eu.jotform.com/app/231283409563356>

QR code to app:



User guide - IOS

- 1) Open the link/QR code with the Safari browser
- 2) Press share (square with arrow pointing up)
- 3) Add to home screen (square with x in the middle)

User guide - Android

- 1) Open the link/QR code with any browser
- 2) Add home screen

Important - Please note

- Parties are not allowed.
- The code for the wooden raft is the same as the code for the keybox.
- The water level in the lake can vary a lot (more than one metre). This does not happen from hour to hour, but gradually over a few days. Therefore, it is important that the raft always is moored properly to prevent the raft from getting stranded.
- You must clean the house before departure.
- Check-in is after 16.00
Check-out is before 16.00
- If the wood fired hot tub is used, please read the user guide **thoroughly**. This is very important as some guests did it wrong, which resulted in a lot of damage, so we had to buy a new hot tub.
- The sliding doors on the ground floor and the 1st floor must be treated with care.
- We have a good relationship with the two neighbours – please do not make too much noise.
- No smoking in the house.
- Pets are not allowed.
- If something breaks in the house, we would also like to have a message about it.
- There are basic cooking stuff – spices, oil etc. – you are welcome to use it - please send us a message if you use the last – so we can replace it.
- Please inform us within the first 12 hours after arrival - if you are dissatisfied with the cleaning.

Electricity is billed according to consumption, while firewood and water are free -please think about the environment.

Practical information - Cottage

Addresses and phone numbers

| Name | Address | Phone number |
|---------------------------------------|---|--------------------|
| Ricco – mobile | | (+45) 23 23 05 15 |
| Camilla – mobile | | (+45) 30 24 57 67 |
| Hospital Värnamo | Doktorsgatan, Värnamo | (+46) 1177 |
| Taxi | | (+46) 371 80 000 |
| Police, ambulance and Fire Department | | (+46) 112 |
| Police Gislaved | Anderstorpsvägen 24, Gislaved | (+46) 77 114 14 00 |
| Police Värnamo | Storgatan 53, Värnamo | (+46) 77 114 14 00 |
| Pharmacy Gnosjö | Järnvägsgatan 49, Gnosjö | (+46) 370 913 10 |
| Pharmacy Gislaved | Köpmangatan 3B, Gislaved | (+46) 77 145 04 50 |
| Electrician * | Gnosjö Elektroarmatur AB Frejgatan 1, Gnosjö | (+46) 370 99 030 |
| Plumbing * | Gnosjö Rörledningsaffär Järnvägsgatan 35, Gnosjö | (+46) 370 99 770 |

* Please contact Camilla and Ricco, if there are problems with the cottage. We can solve most of the problems.

If questions arise, before, while you are in the house or after, please call - even if it is late

Central vacuum cleaner

There are two outlets for central vacuum cleaner, which are located respectively

- Left to the bathroom door - ground floor
- Between the two rooms - first floor

The vacuum cleaner hose is located on the first floor. It's activated when the hose is placed in the socket.

If the vacuum cleaner doesn't work properly it is full and you need to empty it. It's located outside in the storage room next to the carport – marked with a red circle.

User manual (DK):

https://hagenflindt.dk/Sommerhus/Manuals/Vacuum_Cleaner_DK.pdf

User manual (UK):

https://hagenflindt.dk/Sommerhus/Manuals/Vacuum_Cleaner_EN.pdf



Check list - Arrival

1. Check-in time is after 16.00.
2. If you are not satisfied with the cleaning when you arrive – please contact us within twelve hours from arrival.
3. Please send and note the el-metre readings when you have arrived at the house. The electric metre is found in the small power board in the wardrobe.



Check list - Departure

1. Checkout time is no later than 16.00.
2. You need to clean the cottage before departure.
3. Set room temperature controllers in the middle position.
4. Please send and note the el-metre readings before departure. The electric metre is found in the small power board in the wardrobe.
5. Place the key in the keybox- remember to set the numbers at 0000 and close for the black plastic protection.



Child lock

There are child locks on the windows and doors out to the patio/balcony.

The red button must be pressed to open the window wide.

Cleaning

The house must be cleaned before departure.

Cleaning fluid is stored in the room behind the “secret door” next to the toilet.



Coffee machines

There are two different coffee machines in the house:

1. Fully automatic coffee machine with 12 coffee specialities (latte, cappuccino, espresso etc.) - uses whole coffee beans
2. Regular coffee machine - uses grounded coffee

User manual – Fully automatic coffee machine (DK & UK):

<https://hagenflindt.dk/Sommerhus/Manuals/Kaffemaskine-Line....pdf>

User manual – Regular coffee machine (DK & UK):

<https://hagenflindt.dk/Sommerhus/Manuals/Kaffemaskine-Line....pdf>



Dishwasher

There are dishwasher tabs, rinse agent and salt for the dishwasher under the sink or in the hidden room (next to the toilet).



User manual (DK):

https://hagenflindt.dk/Sommerhus/Manuals/Bosch_SMU2HVI70S_Dishwasher.pdf

User manual (UK):

https://hagenflindt.dk/Sommerhus/Manuals/Bosch_SMU2HVI70S_Dishwasher-EN.pdf

Duvets and pillows

There are 9 duvets and pillows.

Electricity

There are two electrical power board in the wardrobe at the front door.

The electric metre needs to be read on arrival and departure. This can be found in the small power board - see the picture to the right. The numbers must be noted in the book and sent to us.



Overview of automatic fuses for electricity (placed in the wardrobe at the entrance)

- | | |
|-------|---|
| 1-2 | Main circuit breaker |
| 3-6 | Secondary circuit breaker |
| 7-9 | Sauna |
| 10 | Dishwasher |
| 11 | Lighting living ground floor |
| 12 | Lighting + Sockets kitchen |
| 13 | Sockets first floor |
| 14 | Sockets outdoor |
| 15 | |
| 16-19 | Secondary circuit breaker |
| 20-22 | Stove |
| 23 | Lighting first floor |
| 24 | Electrical outlets ground floor |
| 25 | Tumble Drums/Washing Machine |
| 26 | Extractor & Sockets kitchen |
| 27 | Central vacuum cleaner |
| 28 | Hot tub |
| 29 | |
| 30-33 | Secondary circuit breaker |
| 34-36 | Heat pump (ground floor – room next toilet) |
| 37 | Underfloor heating |
| 38-39 | Extra hot water tank |
| 40 | Outdoor lighting |
| 41 | Refrigerator (kitchen) and microwave |
| 42 | Transformer for outdoor lighting |

Note

The sauna oven is very power consuming (similar to 133 - 60W bulbs). Please avoid turning on the car charger, oven, electric kettle, microwave, Jacuzzi, washing machine or dryer, while the sauna oven is on, as this may result in a broken fuse or an automatic relay that is turned off.

If there is a power failure – please check:

- Is there a circuit breaker in the wardrobe that needs to be switched on?
- Is there a fuse in the power cabinet at the driveway, which has to be replaced?

Change of fuse:

- Fuses (20 AMP) are located in the power cabinet, which is found at the driveway (see right picture - marked with red circle)
- The key to the power cabinet is located on the wooden key cabinet near the dining table
- The fuses are located at the blue circle in left picture



There is a headlight in the upper cabinet right to the refrigerator or in the drawer next to the oven.

Electricity - dimmers

There are dimmers on most ceiling lamps. If a lamp doesn't work – try to hold in the bottom, because the dimmer is properly at the lowest possible setting. Otherwise, there are light bulbs in the upper cabinet next to the refrigerator.

Garbage:

There are 4 grey garbage bins at the gateway.

- Two “Karl 1” are emptied every second Thursday.
- Two “Karl 2” are emptied every fourth Thursday.

Please check if the garbage bins are going to be emptied when you are in the house.

Please also sort the garbage carefully - otherwise we will get a fine and the garbage is not going to be emptied.



There are 6 extra garbage bins that can be used for glass (2 bins) and metal (4 bins).

Please use Two for glass and four for metal - please only use the extra bins if there is no space for glass and metal in the 4 grey bins.



Please ensure that the boom (250 metres from the house) is open from Wednesday night to Thursday night for free passage for the garbage truck. It is only every second Thursday that the trash is emptied.



Grill

There is a grill (coal) and grill starter in the shed (20 metres from the cottage).

There is a small grill (coal), which is great to take with you on the raft.



Guestbook

We would appreciate it if you write in the guestbook.

Heat

The cottage has two heating sources

1. Underfloor heating in all rooms via geothermal energy
2. Two wood burning stoves

Heat pump/floor heating

Geothermal heat pump is located in the hidden room (next to the toilet).

The heat pump is working correctly when there is no error message on the display or the red button is not flashing on the thermostat on the living room wall towards the bathroom.

If there is an error with the heat pump please contact Ricco.



Note: If there is an error the heat pump still produces heat with 95% probability, but now via electricity that is a more expensive heating method.

The heat in the cottage is controlled centrally and thermostats in each room can be used to fine-tune the heat.

All thermostats are requested to be at the middle setting when you check out.

Brugervejledning (DK):

<https://hagenflindt.dk/Sommerhus/Manuals/VarmePumpe.pdf>

User manual (SE):

https://hagenflindt.dk/Sommerhus/Manuals/Greenline_HT_Plus_SE.pdf

User manual (UK):

https://hagenflindt.dk/Sommerhus/Manuals/HeatPump_EN.pdf

Important: Never adjust the heat pump without prior consultation with Ricco.

Hot tub

Remember to turn on the relay (28) to the hot tub at the power board. The hot tub turns on by pressing the white small switches on the wall (red circle). It lights up the display. Use the display to change settings.

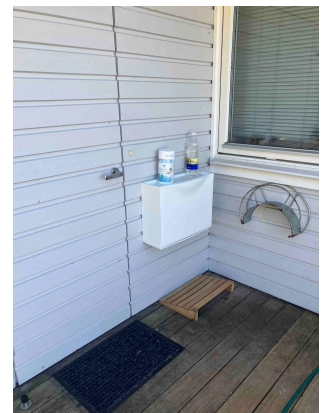


Before use - put a hygiene tablet in the tub – it's placed outside - next to the sauna door in the white IKEA cabinet.

After use:

1. Remove the base plug to empty the tub
2. Rinse the tub clean with water and wash it
3. Hold down the x and y buttons until the display flashes. The spa begins to drying pipes after a while
4. After 10 minutes the tubes are dry
5. Switch off relay (28)

In the geothermal heat pump there is a 165 litre hot water tank and there is an additional water heater with 30 litres.



Avoid using hot water just before the spa is filled - otherwise you have to wait about 30 minutes until new hot water is produced.

Key cabinet

In the wooden key cabinet near the dining table there are keys to the shed, water and electricity. Please put the keys back to the same place.

Microwave

Combi oven with hot air, grill and microwave all-in-one.

User manual Brugervejledning (DK, SE, UK, DE):

<https://hagenflindt.dk/Sommerhus/Manuals/Microwave.pdf>

Oven

Plates and grates to the oven are placed in the plinth drawer under the oven.

Thermometer is built in the oven. There is also a manual thermometer.

User manual (DK):

https://hagenflindt.dk/Pdf/Ovn_DK.pdf

User manual (UK):

https://hagenflindt.dk/Pdf/Oven_UK.pdf

Refrigerators

There are two refrigerators. One in the kitchen and one in the storage room at the carport.

If you use the extra fridge in the storage room in the carport, remember to clean and switch it off before you leave the house.



Road gate

The road gate is seldom locked. There is a key to the road gate along with the key to the house.

Please ensure that the boom (250 metres from the house) is open from Wednesday night to Thursday night for free passage for the garbage truck. It is only every second Thursday that the trash is emptied.



Sauna

The sauna can be used for the steam bath and common sauna.

Remember to turn on the relays (7-9) to the sauna at the power board.

Note

The sauna oven is very power consuming (similar to 133 - 60W bulbs). Please avoid turning on the oven, electric kettle, microwave, Jacuzzi, washing machine or dryer, while the sauna oven is on, as this may result in a broken fuse or an automatic relay that is turned off.

User manual (DK, SE, UK, DE):

<https://hagenflindt.dk/Sommerhus/Manuals/Sauna.pdf>

Smoke detectors

There are smoke detectors both on the ground and first floor. If it beeps then batteries need to be changed. There are new batteries in the upper cabinet next to the refrigerator.

Smoking

Do not smoke inside the cottage.

Thermostats

The heat in the house is controlled centrally and the thermostats in each room can be used to fine-tune the heat.

All thermostats must be set to the middle setting at departure.

Tools

There are tools in the shed:

- Common tools
- High pressure pump - Very useful if your car has a flat tire
- Mitre saw
- Wood splitter
- Chainsaws
- Garden Tools
- Lawn mower



Washing Machine with dryer

There is washing powder in the bathroom closet.

You need to connect power at the switch market with the blue circle.

Turn on the ballofix under the bathroom table (black turntable valve – see red circle). It's turned on if it's in the position as shown in the right picture (it can be a little difficult to find due to the shelf).



Remember not to overfill the washing machine or the dryer (the washing machine can wash more kilogram cloths than the dryer can dry).

User manual (DK):

<https://hagenflindt.dk/Sommerhus/Manuals/Washing-dryer-DK-GDP810642WW.pdf>

User manual (UK):

<https://hagenflindt.dk/Sommerhus/Manuals/Washer-Dryer.pdf>

Do not leave the cottage while the washing machine or the dryer is on.

Water

The water comes from our own well, which is over 100 metres deep.

The water pump and the main switch for the water are located under the sauna.



In the geothermal heat pump there is a 165 litre hot water tank and there is an additional water heater with 30 litres.

Avoid using hot water just before the spa is filled - otherwise you have to wait about 30 minutes until new hot water is produced.

Wood & Wood burning stove

Note: When the stoves are used, there can't be combustible material on the stoves. There must also be at least 1 metre to combustible material in front of the stoves.

You are welcome to use wood from the woodshed.

You are very welcome to cut, split and stable firewood.

Chain saw, splitter and axes can be found in the shed.

The extension cord must be fully rolled out when using the chainsaw or the wood splitter.



Activities - outdoors

Electronic – Arcade machine

User manual

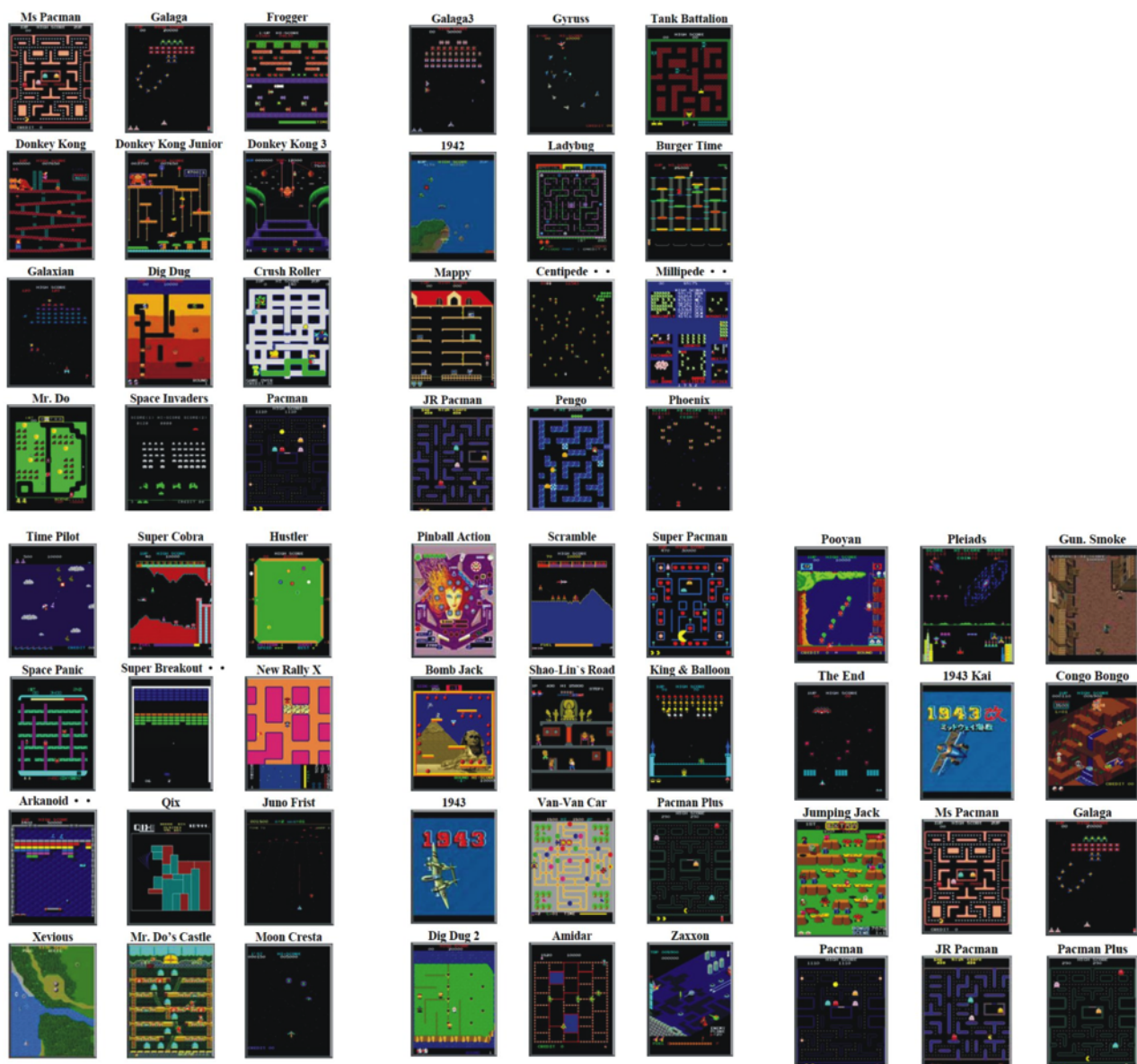
1. Connect the plug to the arcade machine
2. The machine warms up - takes about 1 minute
3. Press "1. Play"
4. Now the joystick can be used to select a game
5. Press "1. Play" or "2. Play"



Important

- **Do not use coin insertion - it may damage the machine**
- Guests who have grown up in the 80's have priority to play ☺

There is 60 classic games from the 1980s - see the list below:



Electronic – Blu-Ray/DVD

Source on TV - choose HDMI.

User manual (DK):

https://hagenflindt.dk/Sommerhus/Manuals/DVD_BLU-RAY_DK.pdf

User manual (UK):

https://hagenflindt.dk/Sommerhus/Manuals/Blueray_BD-J4500R_EN.pdf

Electronic – CD & radio

CD player with radio is located on the first floor.

Electronic – Internet

The router is located on the first floor below the TV. The code is located on the bottom of the router. Note that the quality of the signal fluctuates due to the house's location in the forest. We sometimes find that the signal is better via the phone.

Electronic – TV

There is a 65 inch television on the first floor

User manual (DK):

https://hagenflindt.dk/Sommerhus/Manuals/TV-65PUS8517_DK.pdf

User manual (UK):

https://hagenflindt.dk/Sommerhus/Manuals/TV-65PUS8517_UK.pdf

Activities - outdoors

List of different games and activities - can be found in the shed:

3 bikes
2 bikes for children
Croquet for 8 persons
Viking game
Ring game
Volleyball set
Badminton
Petanque

N.B. The selection may vary, as we are not always notified if things break

Berry

July and August are high season for blueberries, while the season for lingonberries is August and September.

There are berry pickers in the shed.

Read more:

<http://www.sydsverige.dk/?pageID=767>



Bikes

There are two children's bikes and 3 adult bikes (please bring bike helmets).

If the bikes puncture, let us know so that we can "warn" the next guests and make sure to patch them the next time we come to the house as well - if you have the opportunity to patch them yourself, that would of course be really nice 😊



Canoe

The water level in the lake can vary a lot (more than one metre). This does not happen from hour to hour, but gradually over a few days. Therefore, it is important that the canoe after use is placed above the stair to the beach to prevent the canoe from drifting away.



Chain saw / wood splitter

You are very welcome to cut or split firewood ☺.

Chain saw (electric and gasoline), splitter and axes can be found in the shed.

The gasoline powered chain saw uses oil-blended gasoline (green spare canister with black lettering).

Remember to check and refill oil on the chain saws when it's necessary. The oil is in the shed.

The extension cord must be fully rolled out when using the chainsaw or the wood splitter.

User manual – Motorsav benzin / Chain saw (DK, SE & UK):

<https://hagenflindt.dk/Sommerhus/Manuals/Motersav-benzin.pdf>

User manual – Motorsav el / Chain saw (DK):

<https://hagenflindt.dk/Sommerhus/Manuals/Motersav-el.pdf>

User manual – Brændekløver / Wood splitter (DK, SE & UK):

<https://hagenflindt.dk/Sommerhus/Manuals/WoodSplitter.pdf>

Fireplace

Remember to make sure that the fireplace is cold before departure.



Garden furniture

In the summertime chair cushions are in the sauna – remember to take them out when you use the sauna ☺.

Hot tub – outdoor – heated with wood

The wood fired hot tub bath can be used all year. The heating time is typically between 4-8 hours depending on the outdoor temperature and how often firewood is added.

WARNING – Before lighting up the oven then the wood fired hot tub must be filled with water above the barrel's upper inlet. Otherwise there is a risk that the stove will break.

Make a fire in the oven, dry and finely chopped firewood lights up easily and heats up best. For fastest heating - push the wood as far into the oven as possible - you should add firewood every 20-30 minutes.

WARNING - Never use spruce as it causes a lot of sparks.

Use the metal plate to regulate the air inlet. Push it towards the chimney. A good rule of thumb is to open so much that it stops smoking. If there is no smoke, then the combustion is good.

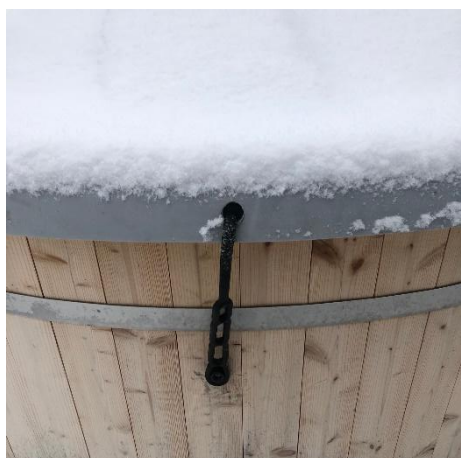
When the combustion is optimal, water will evaporate if you throw it on the chimney. 37-40 degrees is a suitable bathing temperature for most people. The heating goes much faster when the grey lid is on the hot tub.

WARNING – Never drain the water out of the wood fired hot tub until the stove is completely burnt out and cold. Otherwise, there is a risk that the stove will break. The water is drained by turning the red handle (see picture below).

If you are going to use the hot tub for several days, use chlorine tablets - which are available in the bathroom.

WARNING – After the last day of usage of the hot tub. It SHALL be emptied of water after the stove has cooled down. This is especially important in winter, as otherwise there is a risk that the frost can break the hot tub.

IMPORTANT - After cleaning the bath, the lid SHALL be attached with the black straps otherwise the lid can blow the lid off (see picture below).



If you have problems with heating the water fast - the issue is probably

- A) Wet wood
- B) Not enough drafts from the chimney (water will evaporate if you throw it on the chimney)
- C) There is too much ashes in the fire chamber
- D) Wood is not pressed as far as possible in the fire chamber
- E) Wood is not added often enough
- F) The lid is not in place

Lawn mower

You are very welcome to use the lawn mower ☺

The lawn mower uses ordinary gasoline, which is found in the shed.

Note that there are two types of petrol in the shed

1. Ordinary gasoline
2. Oil-blended gasoline (this is used for the chainsaw).

Remember to check and refill oil on the lawn mower when necessary. The oil is found in the shed.

User manual - Plæneklipper / Lawn mower (SE, DK, NO, FI, PT & GR)

<http://hagenflindt.dk/Sommerhus/Brugervejledninger/Plæneklipper.pdf>

User manual - Plæneklipper / Lawn mower (UK, DE, FR, ES, NL & IT)

http://hagenflindt.dk/Sommerhus/Brugervejledninger/Plæneklipper_UK.pdf

Mushrooms

There are plenty of mushrooms in late summer and fall.



More information:

<http://naturstyrelsen.dk/naturoplevelser/naturen-netop-nu/efteraar/svampejagt/>

<http://svampguiden.com>

Outdoors vacuum cleaner

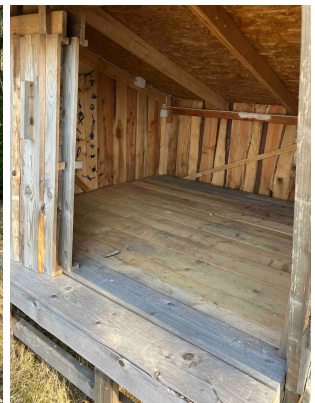
Useful to clean the outdoors hot tub.

Can also be used to soak water.

Is located in the carport storage room.



Play activities



Pressure Washer

Winter: It's placed under the sauna benches (these can be opened from the side)

Summer: It's placed at the storage room at the carport

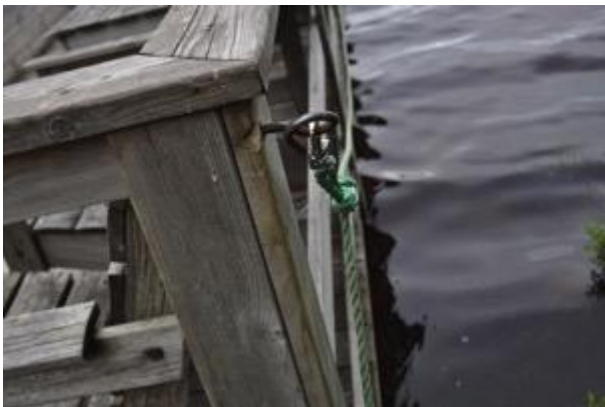


Raft

The water level in the lake can vary a lot (more than one metre). This does not happen from hour to hour, but gradually over a few days. Therefore, it is important that the raft is moored properly to prevent the raft from being stranded.

Correct mooring:

- Place the raft so the engine is furthest away from the shore
- Mount hooks into the eyes on the right side of the raft (picture at the top left)
- Click on the mooring line on the left side to the raft (picture at the top right)
- The boat is now pulled a few metres into the lake (picture at the bottom left)
- The mooring line is now fastened with a double neckline (picture bottom right)



Batteries power the raft.

In the chest (code same as the keybox) there are electric motor and batteries, which shall be connect from plus to plus and minus to minus.

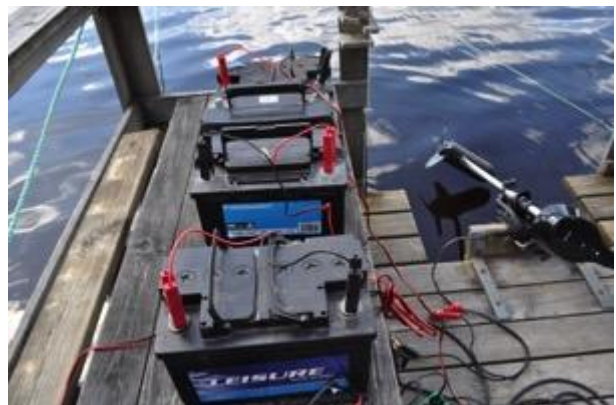
Your sailing trip will be longer - and the risk of running out of power will be less - if the following advice is followed:

1. Make sure that the batteries are fully charged prior to departure
2. Sail always against the current on the outward journey
3. Batteries last longer at low speed

There are battery chargers and a cable drum – which plugs into the outlet in the middle of the stairs (red circle).



Connect the battery charger from plus to plus and minus to minus.



Within 6 hours should the battery be fully charged – this can be checked by removing the battery charger and connect again. Alternative: use the battery tester.

Remember to put caps on the battery to mark that it's fully charged.

Raft - Stranded

- 1) Flat posts are laid lengthwise of the raft at least from the center of the raft and then one meter longer than the raft. A minimum of 4 pieces are laid in total, so that there is a post on each side of the 2 pontoons.



- 2) The raft is lifted by stacking the small boards on top of each other, then lift it (see the pictures below). Round poles are then placed under the pontoons so that the poles support both posts. It is important that at least 3-5 round stakes are placed on which the raft can roll.



3) Push the raft slowly - new round posts are placed in front of the boat. It is a good idea not to be eager when pushing. Otherwise, the raft will run off the posts along the raft and the process will have to be started all over again.

If the raft is very heavy to push, then you can advantageously lift the boat in one or two places before pushing (same technique when lifting the boat to place the round posts)

Practical information:

Banks/ATM

There are banks and ATM's on the main street in Gnosjö and Gislaved.

Map of forest roads



Shopping – grocery

| Shop | City | Address | Webpage |
|-------------|----------|------------------|---|
| Willy:s | Gislaved | Smålandigatan 9 | https://www.willys.se/Vara-butiker/Butiker/Willys-Gislaved/ |
| Netto | Gislaved | Järnvägsgatan 24 | www.netto.se |
| Lidl | Gislaved | Eneströmsgatan 3 | www.lidl.se |
| Coop Konsum | Gislaved | Köpmangatan 6 | www.coop.se |
| ICA Kvantum | Gislaved | Stinsgatan 2 | https://www.ica.se/butiker/kvantum/gislaved/ica-kvantum-gislaved-2346/start/ |
| Coop Konsum | Gnosjö | Storgatan 5 | www.coop.se |
| ICA | Gnosjö | Köpmansgatan 21 | https://www.ica.se/butiker/supermarket/gnosjo/ica-supermarket-gnosjo-2342/start/ |
| Tempo | Hestra | Mogatan 26 | http://www.tempo.se |